

CYCLONE[®] SuperEco



Roof Ventilators

Application

Cyclone Roof Ventilators are ideal for the efficient ventilation of commercial & Industrial applications such as warehouses, factories, offices, schools, hospitals, and multipurpose halls as well as domestic applications.



✓ **FOR INCREASED PRODUCTIVITY**

Benefits of Cyclone

- **Cost-Effective product**
- **Saves energy**
- **Extracts heat & fumes**
- **Better indoor air quality**
- **Robust & durable**
- **Bird-proof & waterproof**
- **No running costs**
- **Low maintenance costs**
- **Silent & efficient operation**
- **Environmentally friendly**
- **Available in various sizes**
- **Aesthetically pleasing**

Operation

Cyclone Roof Ventilators are engineered to use external wind power as the main driving force. The fins are designed to help rotation as well as create suction internally, making the unit work as an exhaust. Due to convection, the hot air rises to the top of the building and is quickly dispelled. This allows a continuous flow of clean, fresh air throughout the building. These 'air changes' produce the desired cooling effect.



STEEL STRUCTURES LTD

DANDORA RD. OFF OUTER RING RD

P.O. BOX 49862 - 00100 NAIROBI

TEL: 781479 / 87 / 89 FAX: 783550 / 783551

Email: info@steelstructureskenya.com

Website: www.steelstructureskenya.com

CYCLONE[®] SuperEco

Roof Ventilators

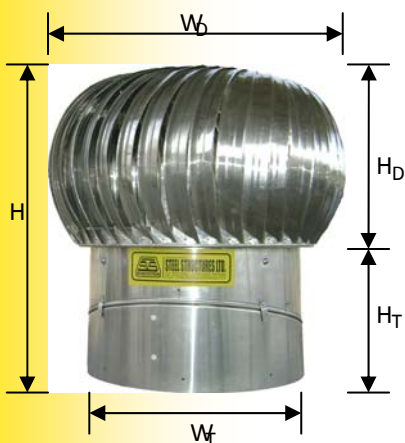
Construction

CYCLONE Roof Ventilators are constructed from galvanized steel components. For special requirements, **CYCLONE roof ventilators** can be manufactured using **aluminium, stainless steel** as well as **pre-painted** galvanised steel material.

Fixing Location

CYCLONE Roof Ventilators should ideally be fixed on the ridge or the highest point of the roof. However, **CYCLONE roof ventilators** may also be fixed anywhere on the roof; a support structure, soaker flanges etc may be required to ensure that the roof is leak proof.

Technical Specifications



Dimensions (Approx.)	CYCLONE 300	CYCLONE 300	CYCLONE 600
	Adjustable	Fixed	Adjustable
Dome Height H_D	250mm	250mm	525mm
Dome Width W_D	450mm	450mm	900mm
Throat Height H_T	350mm	170mm	360mm
Throat Width W_T	300mm	300mm	600mm
Overall Height H	600mm	420mm	885mm
Total Weight (Approx.)	6kg	5.5Kg	17Kg

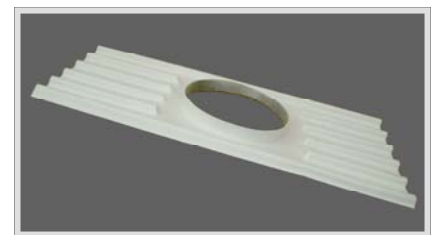
Accessories



Top Plate
(Bottom Plate Similar)



Safety Frame (Adjustable)



Fiberglass Soaker Flange

The name "CYCLONE Roof Ventilator" is a registered trademark of Steel Structures Limited. Use of this name is not allowed without the express permission of Steel Structures Limited. This Roof Ventilator product is also a registered Industrial Design and Utility Model. Manufacturing and/or Trading of this product without the express permission of Steel Structures Limited is illegal.



STEEL STRUCTURES LTD

DANDORA RD. OFF OUTER RING RD

P.O. BOX 49862 - 00100 NAIROBI

TEL: 781479 / 87 / 89 FAX: 783550 / 783551

Email: info@steelstructureskenya.com

Website: www.steelstructureskenya.com